

# AIxURO™

## AI-Assisted Whole-Slide Analysis for Urinary Cytology

Designed to support faster,  
more consistent evaluation.



+90%

SENSITIVITY\*

+50%

REDUCTION  
IN REVIEW TIME\*



VALIDATED  
INTERNATIONALLY



### THE CHALLENGE

Manual review of over 1,000 cells per slide is time intensive and variable. Abnormal cells may be obscured by inflammation or blood. Ongoing workforce shortages further strain laboratory workflows.



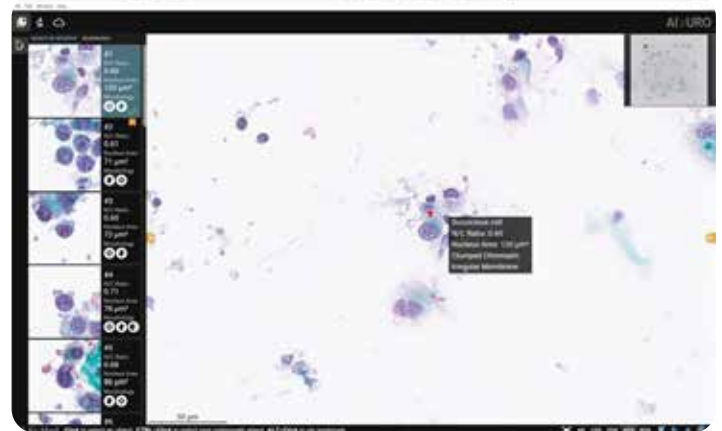
### THE AIxURO SOLUTION

AI-powered analysis trained on thousands of slides and cells to deliver robust performance.

- Identifies and ranks cells of interest
- Presents an Abnormal Cell Gallery for focused review
- Provides comprehensive whole-slide image analysis
- Delivers detailed slide-level statistics
- Enables in-depth cell-by-cell morphological insights

Empowering laboratories to deliver faster, more reliable  
results through advanced artificial intelligence.





### AIxMed Cytology Viewer

Whole-slide analysis with ranked cell gallery and integrated quantitative metrics.

#### Whole-Slide Intelligence

All cells are analyzed across the entire slide. Diagnostically relevant cells are sorted and presented from most to least suspicious, including rare events.

- Ranked gallery presentation
- Rare event surfacing
- Structured visualization of suspicious and atypical findings

#### Quantitative Cell Metrics

Advanced slide-level and cell-level measurements to support structured review and evaluation.

- Total suspicious (SHGUC+) and atypical cell counts
- N/C ratios
- Nucleus area measurements ( $\mu\text{m}^2$ )
- Cell-wise morphology indicators
- Detailed slide-level statistics

#### Workflow Integration

Designed to integrate into existing laboratory environments and pathologist workflows.

- Key AI findings surfaced within LIS/IMS
- Automated summary of suspicious and atypical cells
- Suspicious and atypical cell counts integrated into the pathologist worklist
- Full audit trail for storage, retrieval, and consultation
- On-premise and cloud deployment options available

#### Open Platform Compatibility

Built for compatibility across digital pathology environments.

- Supports SVS, NDPI, MRXS, and selected TIF/DICOM files
- Accepts TIFF, SVS, and JPG image formats
- Optimized output reduces file size by up to 80 percent
- Designed to maximize storage efficiency



**Learn more and schedule a demonstration:**

Scan the QR Code or visit: [aixuro.aixmed.com](http://aixuro.aixmed.com)



#### Clinical Evidence\*

Evaluated in artificial intelligence-enhanced digital urine cytology for bladder cancer diagnosis; Cancer Cytopathology, July 2024. Enhancing Bladder Cancer Diagnosis Through the Integration of an AI-Driven Cytology System; USCAP 2025 Poster Presentation. Study data show a 50 to 80 percent decrease in review time compared to microscopy. Research Use Only. Not for use in diagnostic procedures.